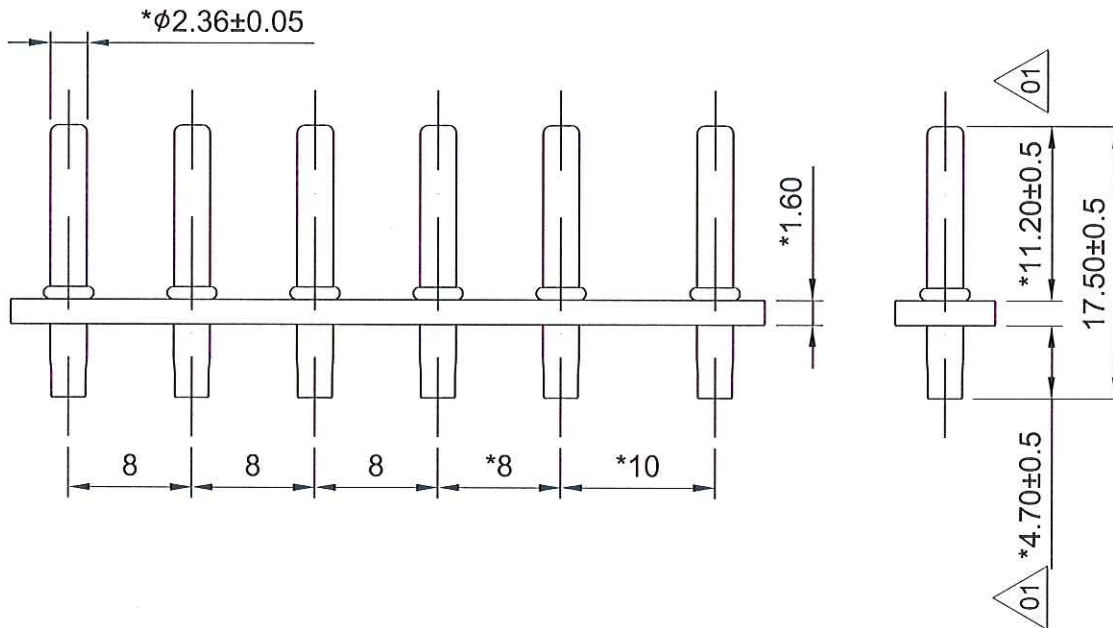
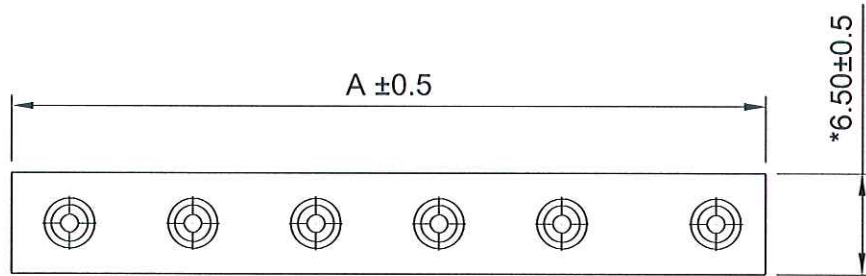


HSF
Compliant

REV.	DESCRIPTION	DATE	APPR.
01	修改尺寸 (4.6→4.7、11.3→11.2)	2010/05/20	林菊艷



Specification

Poles : 1-6

Current Rating : 5A, AC, DC, 250V

Withstanding Voltage :1500 VAC/min.

Insulation Resistance :1000 MΩ min.

Temperature Range :-25°C ~ +85°C

Contact Resistance : Initial Value / 10mΩ max.
after environmental testing / 20mΩ max.

Pin : Brass, Tin plated

Insulator Material : Phenolic Bakelite (94V-0)

Part No.	Dim. A
4236A-WS-01T	6.5
4236A-WS-02T	18
4236A-WS-03T	26
4236A-WS-04T	34
4236A-WS-05T	42
4236A-WS-06T	50

JAWS 兆旭股份有限公司
JAWS CO., LTD.
7F, NO.31, Ln. 169, Kangning St., Xizhi Dist.,
New Taipei City 221, Taiwan (R.O.C.)
TEL:886-2-2692-2898
FAX:886-2-2692-2618
Http://www.jaws.com.tw

THIRD ANGLE
PROJECTION

DESIGN UNITS
■ mm □ INCH

TITLE:
φ2.36 Wafer

GENERAL TOLERANCES:

XX.	±0.30
X.	±0.20
X.X	±0.20
X.XX	±0.10

DRAWN

游熾瑩

DATE 2012/03/01

SIZE: A4
SCALE: FREE
SHEET: 1/1

PARTS NO.:
4236A-WS-xxT

CHECKED

Wang

DATE 2012/03/01

CPN :
DAN NO.: S10103-002

DWG NO.:
JAWS-SOP-4236A001

REV.
01

APPROVED

Wes

DATE 2012/03/01